

Gate valve
soft seated with threaded ends

PN16

WATER



Gate valve 3116 DN32



Gate valve 3126 DN50



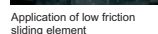
Packing cork protected against unscrewing and fully covered by additional cleaning gasket



Horizontal and vertical double spindle bearing



Replaceable wedge nut



Application of low friction sliding element

Product description (standard execution):

- Body bonnet and wedge made of ductile cast iron EN-GJS 400-15
- Full bore gate valve
- Outside and inside full vulcanized wedge by NBR EPDM; DN25 and DN32 made of brass EN 12165
- Forged replaceable wedge nut made of brass for gate valve DN40 and DN50
- Application of low friction sliding element for DN40 and DN50
- Stainless steel spindle with rolled thread
- Low friction double spindle bearing both horizontal and vertical way
- O-ring spindle sealing packing cork protected against medium
- Under pressure replaceable packing cork
- Forged packing cork protected against unscrewing
- Packing cork protected against dirt penetration
- Body bonnet Zinc coated screws protected by wax
- Epoxy coating minimum 250 microns according to EN 14901 GSK RAL certificate
- Article according to EN 1074-1, EN 1074-2
- Threaded connection according to EN ISO 228-1 pressure PN10; PN16
- Face to face according to producer documentation JAFAR
- Product marking according to EN 19; EN 1074

Application:

Water networks and tanks. Transport of non aggressive liquids.
Working conditions:
temp. up +70°C
pressure up to 1,6 MPa

Execution variant:

Ductile cast iron EN-GJS 500-7
SS body bonnet screws

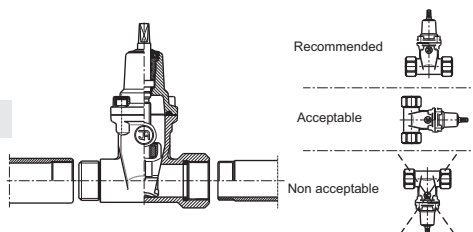
Test control:

Hydraulic test according to EN 1074-1, EN 1074-2; EN 12266-1
Seat 1,1 x PN
Body 1,5 x PN

Installation:

Accessories:

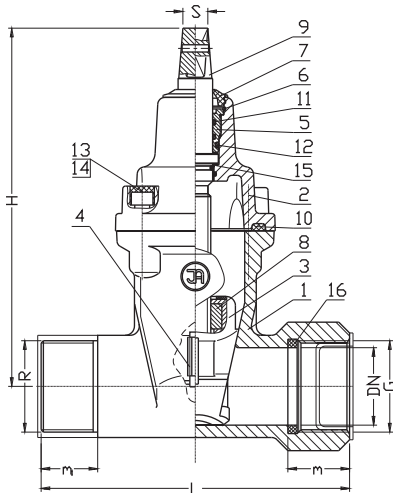
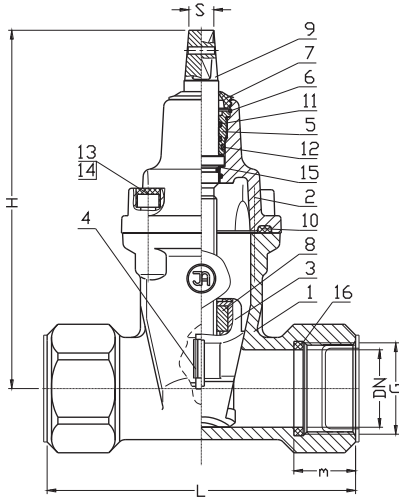
Extension spindle - see: 9010, 9011
Street box - see: 9501 9503 9504 9509



Recommended

Acceptable

Non acceptable



| No. | Part | Standard execution |
|-----|--------------------|---|
| 1 | Body | Ductile cast iron EN-GJS 400-15 EN 1563 |
| 2 | Bonnet | Ductile cast iron EN-GJS 400-15 EN 1563 |
| 3 | Wedge | Brass CW617N (DN25-DN32) EN 12165 Ductile cast iron (DN40-DN50) EN-GJS 400-15; EN 1563 Rubber EPDM NBR PN ISO 1629 |
| 4 | Wedge slider | Tarnoform 300 EN ISO 1874-1 |
| 5 | Packing cork | Brass CW617N EN 12165 |
| 6 | Protection ring | Steel 1.1260 EN-74/H-84032 |
| 7 | Cleaning gasket | Rubber EPDM NBR EN ISO 1629 |
| 8 | Spindle nut | Brass CW617N EN 12165 |
| 9 | Spindle | Stainless steel 1.4021 EN 10088-1 |
| 10 | Body-bonnet gasket | Rubber EPDM NBR EN ISO 1629 |
| 11 | O-ring | Rubber EPDM NBR EN ISO 1629 |
| 12 | O-ring | Rubber EPDM NBR EN ISO 1629 |
| 13 | Screw | Steel Fe/Zn5, stainless steel EN ISO 4762 |
| 14 | Screw stopper | Wax |
| 15 | Washer | Tarnoform 300 EN ISO 1874-1 |
| 16 | Gasket | Rubber EPDM NBR ISO 1629 |

- other material variants on special request

| DN | G / R | L | m | m ₁ | H | S | Weight | |
|------|-------------|------|----|----------------|-----|-----------|--------|-----------|
| [mm] | [cal] | [mm] | | | | 3116 [kg] | | 3126 [kg] |
| 25 | 1" / 1" | 105 | 25 | 40 | 160 | 12 | 2,6 | 2,6 |
| 32 | 5/4" / 5/4" | 120 | 25 | 40 | 160 | 12 | 2,9 | 2,8 |
| 32 | 5/4" / 2" | 130 | 25 | 40 | 160 | 12 | - | 2,7 |
| 40 | 6/4" / 6/4" | 180 | 40 | 40 | 215 | 14 | 6,1 | 5,6 |
| 40 | 6/4" / 2" | 180 | 40 | 40 | 215 | 14 | - | 5,8 |
| 50 | 2" / 2" | 200 | 40 | 40 | 225 | 14 | 6,9 | 6,6 |

We reserve the rights to modify the production program and the given data without separate notices due to the permanent company development.

Connectors
for water line networks

PN16

WATER



Connectors 3150



Connectors 3160



Connectors 3151

Product description (standard execution):

- Body made of ductile cast iron EN-GJS 400-15
- Full bore
- Rubber gasket sealing between tube and connector body
- Fig 3150 (with 2 stainless steel screws) for PE and PVC pipes
- Fig 3160 (with 4 stainless steel screws) for PE and PVC pipes
- Article according to EN 1074-1, EN 1074-2
- Face to face according to the producer documentation JAFAR
- Thread connection 2" according to EN ISO 228-1. Working pressure PN10 and PN16
- Epoxy coating minimum 250 microns according to EN 14901 GSK RAL certificate
- Product marking according to EN 19; EN 1074

Application:

Water and sewage networks and tanks. Transport of non aggressive liquids.

Working conditions:

temp. up +70° C

pressure up to 1,6 MPa

Test control:

Water pressure test according to EN 1074-1; EN 1074-2;

EN 12266-1

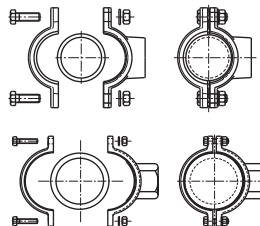
Body: 1,5 x PN

Execution variant:

Ductile cast iron EN-GJS 500-7

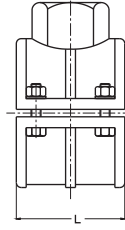
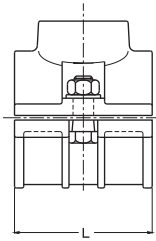
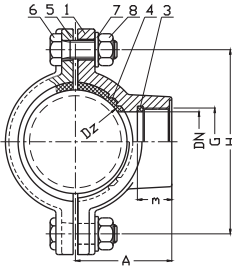
Stainless steel screws

Installation:



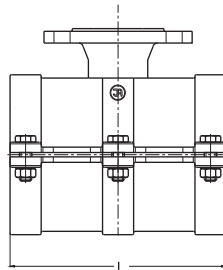
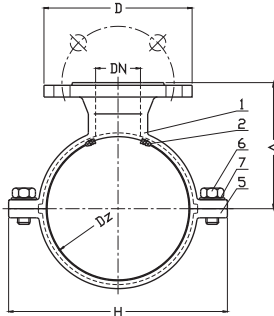
3150

3160



| DN | G | Dz | m | A | H | Weight | Quality | L |
|-------------|-------|------|----|-----|-----|--------|---------|------|
| [mm] | [cal] | [mm] | | | | [kg] | [pcs] | [mm] |
| 3150 | | | | | | | | |
| 50 | 2" | 63 | 40 | 80 | 132 | 3,5 | 2 | 120 |
| 50 | 2" | 90 | 40 | 94 | 160 | 4,4 | 2 | 120 |
| 50 | 2" | 110 | 40 | 104 | 180 | 5,0 | 2 | 120 |
| 50 | 2" | 160 | 40 | 132 | 225 | 6,8 | 2 | 120 |
| 50 | 2" | 200 | 40 | 150 | 270 | 9,3 | 2 | 120 |
| 50 | 2" | 225 | 40 | 162 | 300 | 10,4 | 2 | 120 |
| 3160 | | | | | | | | |
| 50 | 2" | 90 | 40 | 90 | 138 | 2,6 | 4 | 100 |
| 50 | 2" | 110 | 40 | 100 | 163 | 3,3 | 4 | 110 |
| 50 | 2" | 125 | 40 | 112 | 176 | 4,1 | 4 | 110 |
| 50 | 2" | 160 | 40 | 129 | 204 | 4,7 | 4 | 128 |
| 50 | 2" | 180 | 40 | 142 | 230 | 5,2 | 4 | 128 |
| 50 | 2" | 225 | 40 | 151 | 280 | 9,0 | 4 | 180 |
| 50 | 2" | 250 | 40 | 163 | 320 | 9,8 | 4 | 180 |
| 50 | 2" | 280 | 40 | 178 | 340 | 10,6 | 4 | 180 |
| 50 | 2" | 315 | 40 | 196 | 370 | 16,7 | 4 | 180 |

3151



| No. | Part | Standard execution |
|-------------------------|---------------|---|
| 3150, 3160, 3151 | | |
| 1 | Body | Ductile cast iron EN-GJS-400-15 EN 1563 |
| 2 | Seal the tube | Rubber EPDM EN ISO 1629 |
| 3 | Seal the tube | Rubber EPDM EN ISO 1629 |
| 4 | Seal the tube | Rubber EPDM EN ISO 1629 |
| 5 | Connectors | Ductile cast iron EN-GJS-400-15 EN 1563 |
| 6 | Screw | Stainless steel A2 EN ISO 4014 |
| 7 | Washer | Stainless steel A2 EN ISO 7091 |
| 8 | Nut | Stainless steel A4 EN ISO 4032 |

- other material variants on special request

| DN | Dz | H | A | D | L |
|-------------|-------|-----|-----|-----|-----|
| [mm] | | | | | |
| 3151 | | | | | |
| 50 | 63 | 129 | 140 | 165 | 90 |
| 50 | 75 | 141 | 140 | 165 | 115 |
| 50 | 90 | 161 | 145 | 165 | 180 |
| 50 | 110 | 189 | 140 | 165 | 200 |
| 80 | 110 | 189 | 170 | 200 | 200 |
| 50 | 125 | 204 | 160 | 165 | 200 |
| 80 | 125 | 204 | 170 | 200 | 200 |
| 50 | 140 | 219 | 160 | 165 | 200 |
| 80 | 140 | 219 | 170 | 200 | 200 |
| 100 | 140 | 219 | 180 | 220 | 200 |
| 50 | 160 | 239 | 170 | 165 | 250 |
| 80 | 160 | 239 | 200 | 200 | 250 |
| 100 | 160 | 239 | 205 | 220 | 250 |
| 50 | 180 | 259 | 195 | 165 | 250 |
| 80 | 180 | 259 | 225 | 200 | 250 |
| 100 | 180 | 259 | 230 | 220 | 250 |
| 50 | 200 | 279 | 195 | 165 | 250 |
| 80 | 200 | 279 | 225 | 200 | 250 |
| 100 | 200 | 279 | 230 | 220 | 250 |
| 50 | 219,1 | 298 | 195 | 165 | 250 |
| 80 | 219,1 | 298 | 225 | 200 | 250 |
| 100 | 219,1 | 298 | 230 | 220 | 250 |
| 50 | 225 | 304 | 205 | 165 | 250 |
| 80 | 225 | 304 | 225 | 200 | 250 |
| 100 | 225 | 304 | 230 | 220 | 250 |
| 50 | 250 | 345 | 250 | 165 | 300 |
| 80 | 250 | 345 | 250 | 200 | 300 |
| 100 | 250 | 345 | 255 | 220 | 300 |
| 150 | 250 | 345 | 265 | 285 | 300 |
| 50 | 280 | 376 | 260 | 165 | 300 |
| 80 | 280 | 376 | 265 | 200 | 300 |
| 100 | 280 | 376 | 270 | 220 | 300 |
| 150 | 280 | 376 | 280 | 285 | 300 |
| 50 | 315 | 411 | 290 | 165 | 300 |
| 80 | 315 | 411 | 295 | 200 | 300 |
| 100 | 315 | 411 | 300 | 220 | 300 |
| 150 | 315 | 411 | 310 | 285 | 300 |
| 50 | 400 | 496 | 340 | 165 | 300 |
| 80 | 400 | 496 | 350 | 200 | 300 |
| 100 | 400 | 496 | 360 | 220 | 300 |
| 150 | 400 | 496 | 370 | 285 | 300 |

Connector set
for hard pipes

PN16

WATER



3216 + 3330

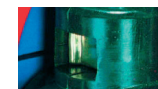


Connector set DN50

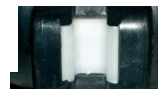


Packing cork protected against unscrewing and fully covered by additional cleaning gasket

horizontal and vertical double spindle bearing



replaceable wedge nut



Application of low friction sliding element

Product description (standard execution):

- Body bonnet and wedge made of ductile cast iron EN-GJS 400-15
- Full bore gate valve
- NBR/EPDM fully vulcanised wedge DN32 made of brass EN 12165
- Wedge nut made of forged brass - replaceable
- Application of low friction sliding element for DN50
- Stainless steel spindle with rolled thread
- Low friction double spindle bearing acting both horizontal and vertical way
- O-ring spindle sealing packing cork protected against contact with medium
- Under pressure replaceable packing cork DN50
- Forged packing cork protected against unscrewing
- Packing cork protected against dirt penetration
- Rubber gasket sealing between tube and connector body
- Body bonnet Zinc coated screws protected by wax
- Easy clamp assembling with the connector jaw
- Gasket positioner against wrong assembling
- Acid resistant steel pipe strap
- Stainless steel clamp screws
- Epoxy coating minimum 250 microns according to EN 14901 GSK RAL certificate
- Article according to EN 1074-1;EN 1074-2
- Face to face according to producer documentation JAFAR
- Product marking according to EN 19; EN 1074

Application:

Water and sewage networks and tanks. Transport of non aggressive liquids.
Working conditions:
temp. up +70° C

Test control:

Water pressure test according to EN 1074-1; EN 1074- 2; EN 12266-1
Seat 1,1 x PN
Body 1,5 x PN
Operation torque test

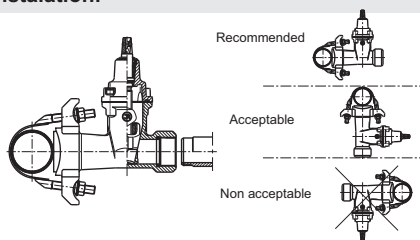
Accessories:

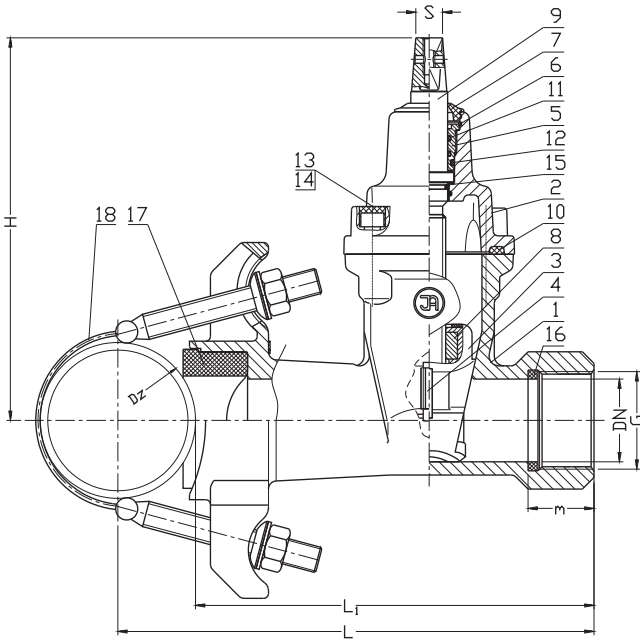
Extension spindle - see: 9010, 9011
Street box - see: 9501, 9503, 9504, 9509

Execution variant:

Ductile cast iron EN-GJS 500-7
Connecting screws made of stainless steel

Installation:





| No. | Part | Standard execution |
|-----|-----------------|---|
| 1 | Body | Ductile cast iron EN-GJS-400-15 EN 1563 |
| 2 | Bonnet | Ductile cast iron EN-GJS-400-15 EN 1563 |
| 3 | Wedge | Brass CW617N DN32 EN 12165 Ductile cast iron DN50 EN-GJS-400-15 EN 1563 Rubber EPDM NBR EN SO 1629 |
| 4 | Wedge slider | Tarnoform 300 EN ISO 1874-1 |
| 5 | Packing cork | Brass CW617N EN 12165 |
| 6 | Protection ring | Steel 1.1260 |
| 7 | Cleaning gasket | Rubber EPDM NBR EN ISO 1629 |
| 8 | Spindle nut | Brass CW617N EN 12165 |
| 9 | Spindle | Steel 1.4021 EN 10088-1 |
| 10 | Bonnet gasket | Rubber EPDM NBR EN ISO 1629 |
| 11 | O-ring | Rubber EPDM NBR EN ISO 1629 |
| 12 | O-ring | Rubber EPDM NBR EN ISO 1629 |
| 13 | Screw | Steel Fe/Zn5 stainless steel EN ISO 4762 |
| 14 | Screw stopper | Wax |
| 15 | Washer | Tarnoform 300 EN ISO 1874-1 |
| 16 | Pipe gasket | Rubber EPDM NBR EN ISO 1629 |
| 17 | Pipe gasket | Rubber EPDM NBR EN ISO 1629 |
| 18 | Pipe strap | Stainless steel EN 10088-1 Rubber EPDM NBR EN ISO1629 |

| DN | G | Dz | L | L ₁ | m | H | S | Weight |
|------|-------|--------|----------------------|----------------|----|-----|----|--------|
| [mm] | [cal] | | | [mm] | | | | [kg] |
| 32 | 5/4" | 88-738 | L ₁ +Dz/2 | 205 | 25 | 160 | 12 | 6,8 |
| 50 | 2" | | L ₁ +Dz/2 | 260 | 40 | 225 | 14 | 11,7 |

Connector set
for soft pipes PE and PVC

PN10
PN16

WATER



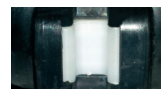
Connector set DN50



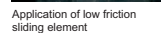
Packing cork protected against unscrewing and fully covered by additional cleaning gasket



Horizontal and vertical double spindle bearing



Replaceable wedge nut



Application of low friction sliding element

Product description (standard execution):

- Body bonnet and wedge made of ductile cast iron EN-GJS 400-15
- Full bore gate valve
- NBR/EPDM fully vulcanised wedge; DN25 and DN32 made of brass EN 12165
- Application of low friction sliding element for DN40-DN50
- Wedge nut made of forged brass - replaceable for DN40-DN50
- Stainless steel spindle with rolled thread
- Low friction double spindle bearing acting both horizontal and vertical way
- O-ring spindle sealing packing cork protected against contact with medium
- Under pressure replaceable packing cork for DN40-DN50
- Forged packing cork protected against unscrewing
- Packing cork protected against dirt penetration
- Rubber gasket sealing between tube and connector body
- Body bonnet Zinc coated screws protected by wax
- Epoxy coating minimum 250 microns according to EN 14901 GSK RAL certificate
- Article according to EN 1074-1, EN 1074-2
- Threaded connection according to EN 10226-1; pressure PN10 and PN16
- Face to face according to producer documentation JAFAR
- Product marking according to: EN 19; EN 1074

Application:

Water and sewage networks and tanks. Transport of non aggressive liquids.
Working conditions:
temp. up +70°C
pressure up to 1,6 MPa

Test control:

Water pressure test according to EN 1074-1; EN 1074-2; EN 12266-1
Seat 1,1 x PN
Body 1,5 x PN
Operation torque test

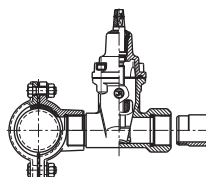
Accessories:

Extension spindle - see: 9010, 9011
Street box - see: 9501, 9503, 9504, 9509

Execution variant:

Ductile cast iron EN-GJS 500-7
Connecting screws made of stainless steel

Installation:



Recommended

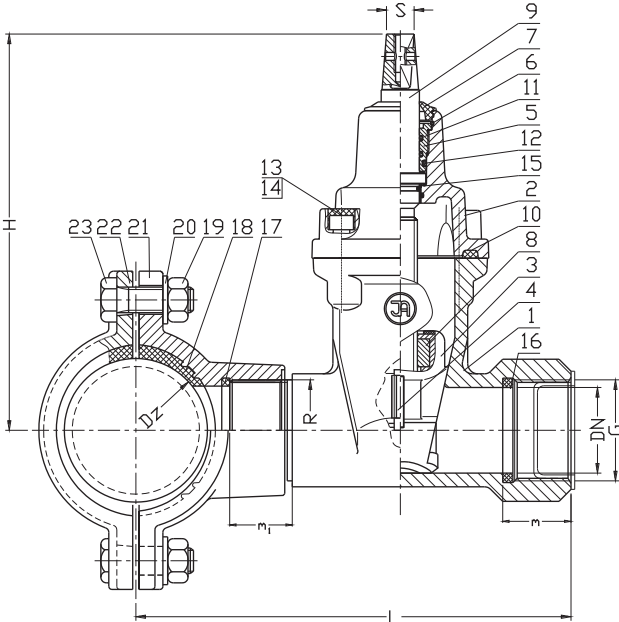


Acceptable



Non acceptable





| DN | G / R | Dz | L | m | m ₁ | H | S | Weight | Quantity screw | | |
|----------|----------------------|-----|-----------|------|----------------|-----|----|-------------|----------------|------------|-------|
| [mm] | [cal] | | | [mm] | | | | [kg] | [pcs] | | |
| 25 32 | 1" / 2" 5/4" / 2" | 63 | 180 | 25 | 40 | 160 | 12 | 6,2 | 2 | | |
| | | 90 | 194 / 197 | 25 | 40 | 160 | 12 | 7,1 / 5,3 | 2 / 4 | | |
| | | 110 | 204 / 205 | 25 | 40 | 160 | 12 | 7,7 / 6,0 | 2 / 4 | | |
| | | 125 | 212 / 222 | 25 | 40 | 160 | 12 | 8,5 / 8,0 | 2 / 4 | | |
| | | 160 | 232 / 231 | 25 | 40 | 160 | 12 | 9,5 / 7,4 | 2 / 4 | | |
| | | 180 | 251 | 25 | 40 | 160 | 12 | 7,9 | 4 | | |
| | | 200 | 255 | 25 | 40 | 160 | 12 | 12,0 | 2 | | |
| | | 225 | 264 | 25 | 40 | 160 | 12 | 13,1 | 2 | | |
| | | 250 | 273 | 25 | 40 | 160 | 12 | 16,2 | 2 | | |
| | | 280 | 288 | 25 | 40 | 160 | 12 | 16,9 | 2 | | |
| | | 315 | 306 | 25 | 40 | 160 | 12 | 19,4 | 2 | | |
| | | 63 | 215 | 40 | 40 | 215 | 14 | 9,3 | 2 | | |
| 40 | 6/4" / 2" | 90 | 229 / 232 | 40 | 40 | 215 | 14 | 10,2 / 8,4 | 2 / 4 | | |
| | | 110 | 239 / 240 | 40 | 40 | 215 | 14 | 10,8 / 9,1 | 2 / 4 | | |
| | | 125 | 247 / 257 | 40 | 40 | 215 | 14 | 11,6 / 9,9 | 2 / 4 | | |
| | | 160 | 267 / 266 | 40 | 40 | 215 | 14 | 12,6 / 10,5 | 2 / 4 | | |
| | | 180 | 286 | 40 | 40 | 215 | 14 | 11,0 | 4 | | |
| | | 200 | 290 | 40 | 40 | 215 | 14 | 15,1 | 2 | | |
| | | 225 | 299 | 40 | 40 | 215 | 14 | 16,2 | 2 | | |
| | | 250 | 308 | 40 | 40 | 215 | 14 | 19,3 | 2 | | |
| | | 280 | 321 | 40 | 40 | 215 | 14 | 20,0 | 2 | | |
| | | 315 | 341 | 40 | 40 | 215 | 14 | 22,5 | 2 | | |
| | | 50 | 2" / 2" | 63 | 235 | 40 | 40 | 225 | 14 | 10,0 | 2 |
| | | | | 90 | 249 / 252 | 40 | 40 | 225 | 14 | 11,0 / 9,2 | 2 / 4 |
| 110 | 259 / 260 | | | 40 | 40 | 225 | 14 | 11,6 / 9,9 | 2 / 4 | | |
| 125 | 267 / 277 | | | 40 | 40 | 225 | 14 | 12,4 / 10,7 | 2 / 4 | | |
| 160 | 287 / 286 | | | 40 | 40 | 225 | 14 | 13,4 / 11,3 | 2 / 4 | | |
| 180 | 306 | | | 40 | 40 | 225 | 14 | 11,8 | 4 | | |
| 200 | 310 | | | 40 | 40 | 225 | 14 | 15,6 | 2 | | |
| 225 | 319 | | | 40 | 40 | 225 | 14 | 17,0 | 2 | | |
| 250 | 328 | | | 40 | 40 | 225 | 14 | 20,1 | 2 | | |
| 280 | 341 | | | 40 | 40 | 225 | 14 | 20,8 | 2 | | |
| 315 | 361 | | | 40 | 40 | 225 | 14 | 23,3 | 2 | | |

| No. | Part | Standard execution |
|-----|--------------------|--|
| 1 | Body | Ductile cast iron EN-GJS-400-15 EN 1563 |
| 2 | Bonnet | Ductile cast iron EN-GJS-400-15 EN 1563 |
| 3 | Wedge | Brass CW617N (DN25-DN32) EN 12165 Ductile cast iron(DN40-DN50) EN-GJS-400-15, EN 1563 Rubber EPDM NBR EN ISO 1629 |
| 4 | Wedge slider | Tarnof orm 300 EN ISO 1874-1 |
| 5 | Packing cork | Brass CW617N EN 12165 |
| 6 | Protection ring | Steel 1.1260 |
| 7 | Cleaning gasket | Rubber EPDM NBR EN ISO 1629 |
| 8 | Spindle nut | Brass CW617N EN 12165 |
| 9 | Spindle | Stainless steel 1.4021 EN 10088-1 |
| 10 | Body-bonnet gasket | Rubber EPDM NBR EN ISO 1629 |
| 11 | O-ring | Rubber EPDM NBR EN ISO 1629 |
| 12 | | |
| 13 | Screw | Steel Fe/Zn5 stainless steel EN ISO 4762 |
| 14 | Screw stopper | Wax |
| 15 | Washer | Tarnof orm 300 EN ISO 1874-1 |
| 16 | Seal the tube | Rubber EPDM NBR EN ISO 1629 |
| 18 | | |
| 19 | Nut | Stainless steel A4 EN ISO 4032 |
| 20 | Washer | Stainless steel A2 EN ISO 7091 |
| 21 | Footing | Ductile cast iron EN-GJS-400-15 EN 1563 |
| 22 | Connectors | Ductile cast iron EN-GJS-400-15 EN 1563 |
| 23 | Screw | Stainless steel A2 EN ISO 4014 |

- other material variants on special request

We reserve the rights to modify the production program and the given data without separate notices due to the permanent company development.

Connector set
for hard pipes

PN10
PN16

WATER



Connector set DN50



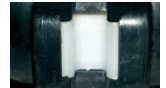
Packing cork protected against unscrewing and fully covered by additional cleaning gasket



Horizontal and vertical double spindle bearing



Replaceable wedge nut



Application of low friction sliding element

Product description (standard execution):

- Body bonnet and wedge made of ductile cast iron EN-GJS 400-15
- Full bore gate valve
- NBR/EPDM fully vulcanised wedge DN32 made of brass EN 12165
- Application of low friction sliding element for DN40-DN50
- Wedge nut made of forged brass - replaceable for DN40-DN50
- Stainless steel spindle with rolled thread
- Low friction double spindle bearing acting both horizontal and vertical way
- O-ring spindle sealing packing cork protected against contact with medium
- Under pressure replaceable packing cork(DN40 and DN50)
- Forged packing cork protected against unscrewing
- Packing cork protected against dirt penetration
- Rubber gasket sealing between tube and connector body
- Body bonnet Zinc coated screws protected by wax
- Easy clamp assembling with the connector jaw
- Gasket positioner against wrong assembling
- Acid resistant steel pipe strap
- Stainless steel clamp screws
- Epoxy coating - minimum 250 microns according to EN 14901 GSK RAL certificate
- Article according to EN 1074-1, EN 1074-2
- Face to face according to producer documentation JAFAR
- Product marking according to: EN 19; EN 1074

Application:

Water and sewage networks and tanks. Transport of non aggressive liquids.
Working conditions:
temp. up +70°C
pressure up to 1,6 MPa

Test control:

Water pressure test according to EN 1074-1; EN 1074-2; EN 12266-1
Seat 1,1 x PN
Body 1,5 x PN
Operation torque test

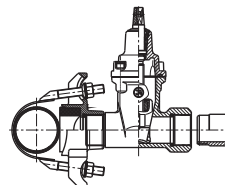
Accessories:

Extension spindle - see: 9010, 9011
Street box - see: 9501, 9503, 9504, 9509

Execution variant:

Ductile cast iron EN-GJS 500-7
Connecting screws made of stainless steel

Installation:



Recommended

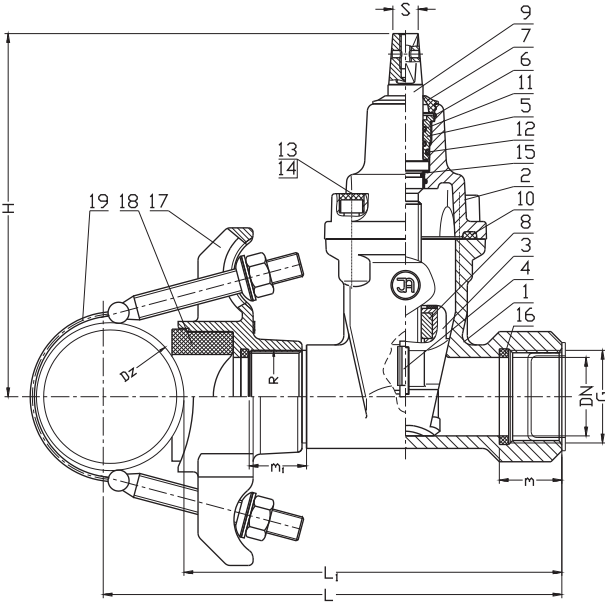


Acceptable



Non acceptable





| No. | Part | Standard execution |
|-----|--------------------|--|
| 1 | Body | Ductile cast iron EN-GJS-400-15 EN 1563 |
| 2 | Bonnet | Ductile cast iron EN-GJS-400-15 EN 1563 |
| 3 | Wedge | Brass CW617N DN32 EN 12165 Ductile cast iron DN40-DN50 EN-GJS-400-15 EN 1563 Rubber EPDM NBR EN SO 1629 |
| 4 | Wedge slider | Tamoform 300 EN ISO 1874-1 |
| 5 | Packing cork | Brass CW617N EN 12165 |
| 6 | Protection ring | Steel 1.1260 |
| 7 | Cleaning gasket | Rubber EPDM NBR EN ISO 1629 |
| 8 | Spindle nut | Brass CW617N EN 12165 |
| 9 | Spindle | Steel 1.4021 EN 10088-1 |
| 10 | Body-bonnet gasket | Rubber EPDM NBR EN ISO 1629 |
| 11 | O-ring | Rubber EPDM NBR EN ISO 1629 |
| 12 | O-ring | Rubber EPDM NBR EN ISO 1629 |
| 13 | Screw | Steel Fe/Zn5 stainless steel EN ISO 4762 |
| 14 | Screw stoper | Wax |
| 15 | Washer | Tamoform 300 EN ISO 1874-1 |
| 16 | Seal the tube | Rubber EPDM NBR EN ISO 1629 |
| 17 | Clamp saddle | Ductile cast iron EN-GJS-400-15 EN 1563 |
| 19 | Pipe strap | Stainless steel EN 10088-1 Rubber EPDM NBR EN ISO1629 |

| DN | G / R | Dz | L | L ₁ | m | m ₁ | H | S | Weight |
|------|-------------|--------|----------------------|----------------|----|----------------|-----|----|--------|
| [mm] | [cal] | | | | | | | | [kg] |
| 32 | 5/4" / 5/4" | 88-738 | L ₁ +Dz/2 | 165 | 25 | 40 | 160 | 12 | 6,8 |
| 32 | 5/4" / 2" | 88-738 | L ₁ +Dz/2 | 175 | 25 | 40 | 160 | 12 | 6,9 |
| 40 | 6/4" / 6/4" | 88-738 | L ₁ +Dz/2 | 225 | 40 | 40 | 215 | 14 | 10,5 |
| 40 | 6/4" / 2" | 88-738 | L ₁ +Dz/2 | 225 | 40 | 40 | 215 | 14 | 10,6 |
| 50 | 2" / 2" | 88-738 | L ₁ +Dz/2 | 245 | 40 | 40 | 225 | 14 | 11,7 |

Tapping saddle
for PE and PVC pipes

PN10
PN16

WATER



Tapping saddle DN50

Product description (standard execution):

- Body bonnet and wedge made of ductile cast iron EN-GJS 400-15
- Head protected against unscrewing
- Drill diameter 38 mm
- Elongated drilling knife made of stainless steel
- O-ring spindle sealing, packing cork protected against contact with medium
- Connection diameter 5/4" or 2"
- External diameter of PVC, PE HD80, PE HD100 and PE HD100RC pipes: 63, 90, 110, 125, 140, 160, 200, 225,
- EPDM fully covered clamp
- Body-clamp stainless steel screws
- Clean gasket protecting packing cork against dirt penetration from outside
- Epoxy coating minimum 250 microns according to EN 14901 GSK RAL certificate
- Article according to EN 1074-1, EN 1074-2, EN 1171
- Face to face according to producer documentation JAFAR
- Product marking according to: EN 19, EN 1074

Application:

Water and sewage networks and tanks. Transport of non aggressive liquids.
Working conditions:
temp. up +70°C
pressure up to 1,6 MPa

Execution variant:

Ductile cast iron EN-GJS 500-7

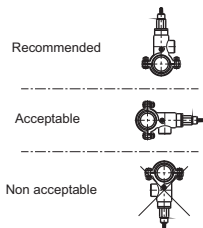
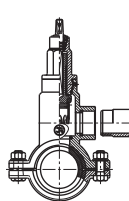
Test control:

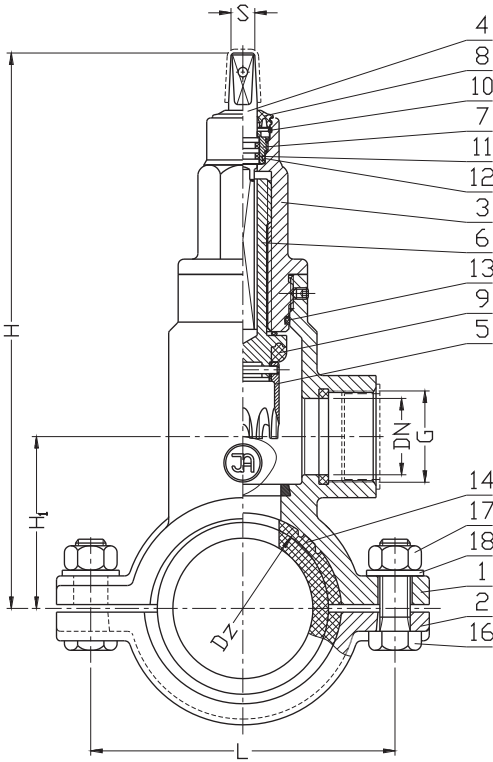
Water pressure test according to EN 1074-1; EN 1074- 2; EN 12266-1
Seat 1,1 x PN
Body 1,5 x PN
Operation torque test

Instalation:

Accessories:

Extension spindle - see: 9010, 9011
Street box - see: 9501, 9503, 9504, 9509





| No. | Part | Standard execution |
|-------|-----------------|---|
| 1 | Body | Ductile cast iron EN-GJS-400-15 EN 1563 |
| 2 | Clamp | Ductile cast iron EN-GJS-400-15 EN 1563 |
| 3 | Cap | Ductile cast iron EN-GJS-400-15 EN 1563 |
| 4 | Spindle | Stainless steel 1.4021 EN 10088-1 |
| 5 | Knife | Stainless steel 1.4541 EN 10088-1 |
| 6 | Coupler | Brass CW617N EN 12165 |
| 7 | Packing cork | Brass CW617N EN 12165 |
| 8 | Cleaning gasket | Rubber EPDM EN ISO 1629 |
| 9 | Gasket | Rubber EPDM EN ISO 1629 |
| 10 | Protection ring | Steel 1.1260 |
| 11-13 | O-ring | Rubber EPDM EN ISO 1629 |
| 14 | Seal the tube | Rubber EPDM EN ISO 1629 |
| 16 | Screw | Stainless steel A2 EN ISO 4017 |
| 17 | Nut | Stainless steel A4 EN ISO 4032 |
| 18 | Washer | Stainless steel A2 EN ISO 7091 |

- other material variants on special request

| DN | G | Dz | H ₁ | H | L | S | Weight |
|------|------|-----|----------------|------|-----|----|--------|
| [mm] | [ca] | | | [mm] | | | [kg] |
| 32 | 5/4" | 63 | 77 | 280 | 132 | 12 | 6,4 |
| 32 | 5/4" | 90 | 90 | 293 | 160 | 12 | 7,9 |
| 32 | 5/4" | 110 | 100 | 303 | 180 | 12 | 8,2 |
| 32 | 5/4" | 125 | 112 | 315 | 200 | 12 | 8,5 |
| 32 | 5/4" | 140 | 116 | 320 | 205 | 12 | 8,7 |
| 32 | 5/4" | 160 | 126 | 330 | 225 | 12 | 10,2 |
| 32 | 5/4" | 200 | 145 | 348 | 274 | 12 | 12,5 |
| 32 | 5/4" | 225 | 158 | 360 | 300 | 12 | 13,6 |
| 50 | 2" | 63 | 77 | 280 | 132 | 12 | 6,8 |
| 50 | 2" | 90 | 90 | 293 | 160 | 12 | 7,9 |
| 50 | 2" | 110 | 100 | 303 | 180 | 12 | 8,3 |
| 50 | 2" | 125 | 112 | 315 | 200 | 12 | 8,8 |
| 50 | 2" | 140 | 116 | 320 | 205 | 12 | 9,3 |
| 50 | 2" | 160 | 126 | 330 | 225 | 12 | 10,1 |
| 50 | 2" | 200 | 145 | 348 | 274 | 12 | 12,5 |
| 50 | 2" | 225 | 158 | 360 | 300 | 12 | 13,3 |

We reserve the rights to modify the production program and the given data without separate notices due to the permanent company development.

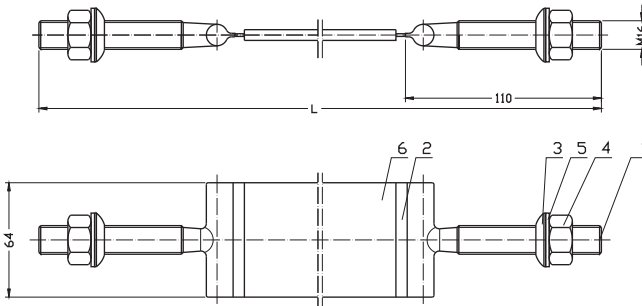
Pipe strap for water lines

PN16

WATER



Pipe strap DN100



| No. | Part | Standard execution |
|-----|------------|-----------------------------------|
| 1 | Bolt | Stainless steel A2 EN ISO 4762 |
| 2 | Rubber mat | Rubber EPDM EN ISO1629 |
| 3 | Bracket | Stainless steel EN 10088-1 |
| 4 | Nut | Stainless steel A4 EN ISO 4032 |
| 5 | Washer | Stainless steel A2 EN ISO 7091 |
| 6 | Clamp | Stainless steel EN 10088-1 |

| DN | Pipe range (*) | L | Weight |
|-----|----------------|------|--------|
| | [mm] | | [kg] |
| 80 | 88 - 104 | 395 | 0,7 |
| 100 | 108 - 120 | 450 | 0,7 |
| 125 | 133 - 149 | 515 | 0,8 |
| 150 | 159 - 184 | 598 | 0,9 |
| 175 | 191 - 213 | 680 | 0,9 |
| 200 | 216 - 234 | 752 | 1,1 |
| 225 | 241 - 259 | 832 | 1,1 |
| 250 | 267 - 298 | 920 | 1,2 |
| 300 | 318 - 340 | 1044 | 1,4 |
| 300 | 340 - 370 | 1122 | 1,4 |
| 350 | 378 - 412 | 1247 | 1,5 |
| 400 | 406 - 429 | 1315 | 1,6 |
| 450 | 470 - 480 | 1420 | 1,7 |
| 500 | 508 - 532 | 1630 | 2,0 |
| 600 | 610 - 635 | 1945 | 2,3 |
| 700 | 710 - 738 | 2270 | 2,8 |
| 800 | 812,8 | 2540 | 3,2 |
| 800 | 848 | 2660 | 3,3 |

(*) -by customer requirements

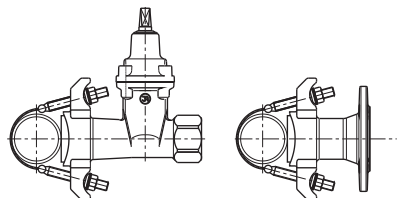
Product description (standard execution):

- Strap made of acid proof steel
- Shape of rubber gasket EPDM provide good contact even in places with small defects irregularities, pitting resulting of corrosion
- Tie screws made of stainless steel
- Face to face according to producer documentation
- Product marking according to: EN 19; EN 1074

Application:

Water and sewage networks and tanks. Transport of non aggressive liquids.
Working conditions:
temp. up +70° C
pressure up to 1,6 MPa

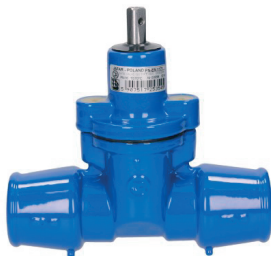
Installation:



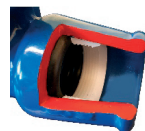
Resilient seated Gate valve with ISO fitting for PE pipe both ends

PN16

WATER



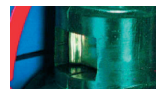
Gate valve DN32 ISO40



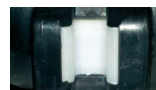
Sealing with the clamping ring and O-ring



Horizontal and vertical double spindle bearing



Replaceable wedge nut



Application of low friction sliding element

Product description (standard execution):

- Body bonnet and wedge made of ductile cast iron EN-GJS 400-15
- POM tube clamping ring protection against slipping
- Full bore gate valve
- Outside and inside full vulcanized wedge by NBR EPDM; DN25 and DN32 made of brass EN 12165
- Forged replaceable wedge nut made of brass for gate valve DN40 and DN50
- Application of low friction sliding element for gate valve DN40 and DN50
- Stainless steel spindle with rolled thread
- Low friction double spindle bearing both horizontal and vertical way
- O-ring spindle sealing packing cork protected against medium
- Under pressure replaceable packing cork
- Forged packing cork protected against unscrewing
- Packing cork protected against dirt penetration
- Body bonnet Zinc coated screws protected by wax
- Epoxy coating minimum 250 microns according to EN 14901 GSK RAL certificate
- Article according to EN 1074-1, EN 1074-2
- Face to face according to producer documentation JAFAR
- Product marking according to EN 19; EN 1074

Application:

Water networks and tanks. Transport of non aggressive liquids.
Working conditions:
temp. up +70°C
pressure up to 1,6 MPa

Execution variant:

Ductile cast iron EN-GJS 500-7
SS body bonnet screws

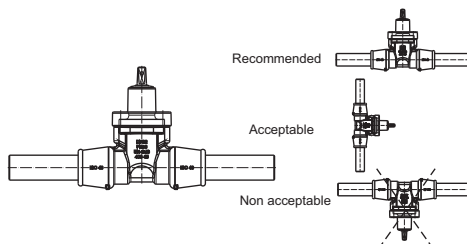
Test control:

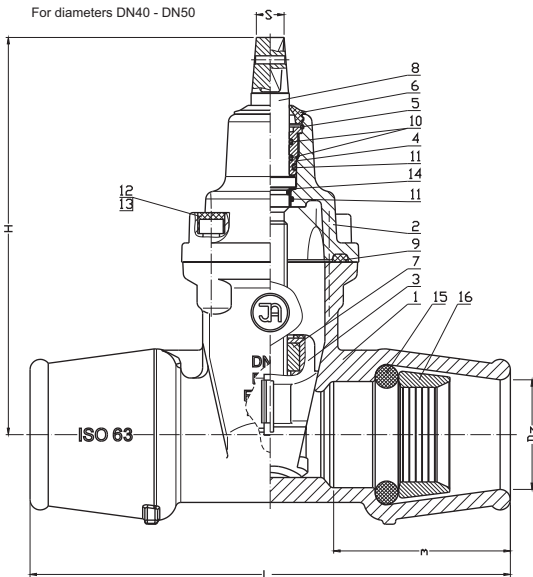
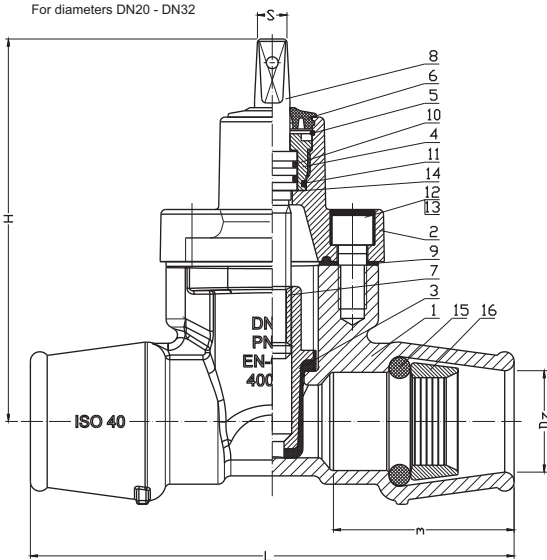
Hydraulic test according to EN 1074-1, EN 1074-2; EN 12266-1
Seat 1,1 x PN
Body 1,5 x PN
Operation torque test

Accessories:

Extension spindle - see: 9010, 9011
Welt for ISO connections - see: 9306
Street box - see: 9501 9503 9504 9509

Installation:





| No. | Part | Standard execution |
|-----|--------------------|--|
| 1 | Body | Ductile cast iron EN-GJS 400-15 EN 1563 |
| 2 | Bonnet | Ductile cast iron EN-GJS 400-15 EN 1563 |
| 3 | Wedge | Brass CW617N (DN20-DN32) EN 1982 Ductile cast iron (DN40-DN50) EN-GJS 400-15; EN 1563 Rubber EPDM NBR PN ISO 1629 |
| | Wedge slider | Tarnoform 300 (DN40-DN50) EN ISO 1874-1 |
| 4 | Packing cork | Brass CW617N EN 12165 |
| 5 | Protection ring | Steel 1.1260 EN-74/H-84032 |
| 6 | Cleaning gasket | Rubber EPDM NBR EN ISO 1629 |
| 7 | Spindle nut | Brass CW617N (DN40-DN50) EN 12165 |
| 8 | Spindle | Stainless steel 1.4021 EN 10088-1 |
| 9 | Body-bonnet gasket | Rubber EPDM NBR EN ISO 1629 |
| 10 | O-ring | Rubber EPDM NBR EN ISO 1629 |
| 11 | O-ring | Rubber EPDM NBR EN ISO 1629 |
| 12 | Screw | Steel Fe/Zn5, stainless steel EN ISO 4762 |
| 13 | Screw stopper | Wax |
| 14 | Washer | Tarnoform 300 EN ISO 1874-1 |
| 15 | Gasket | Rubber EPDM NBR ISO 1629 |
| 16 | Tension ring | POM EN ISO 1874-1 |

- other material variants on special request

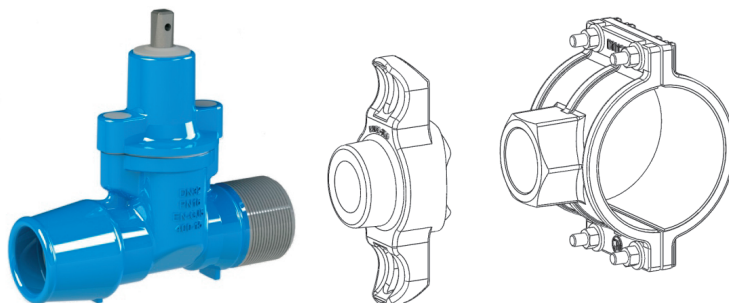
| DN | Dz | PN | H | L | m | S | Weight |
|------|------|-------|------|------|------|------|--------|
| [mm] | [mm] | [Bar] | [mm] | [mm] | [mm] | [mm] | [kg] |
| 20* | 25 | 16 | 160 | 165 | 52 | 12 | 3 |
| 25 | 32 | 16 | 160 | 184 | 72 | 12 | 3.5 |
| 32 | 40 | 16 | 160 | 205 | 77 | 12 | 4,1 |
| 40 | 50 | 16 | 215 | 230 | 80 | 14 | 7 |
| 50 | 63 | 16 | 225 | 270 | 85 | 14 | 8,5 |

* during commissioning

Resilient seated Gate valve with ISO/2" fitting for PE pipe

PN16

WATER



Gate valve DN32 ISO40/2"

Product description (standard execution):

- Body bonnet and wedge made of ductile cast iron EN-GJS 400-15
- POM tube clamping ring protection against slipping
- Full bore gate valve
- Outside and inside full vulcanized wedge by NBR EPDM; DN25 and DN32 made of brass EN 12165
- Forged replaceable wedge nut made of brass for gate valve DN40 and DN50
- Application of low friction sliding element for gate valve DN40 and DN50
- Stainless steel spindle with rolled thread
- Low friction double spindle bearing both horizontal and vertical way
- O-ring spindle sealing packing cork protected against medium
- Under pressure replaceable packing cork
- Forged packing cork protected against unscrewing
- Packing cork protected against dirt penetration
- Body bonnet Zinc coated screws protected by wax
- Epoxy coating minimum 250 microns according to EN 14901 GSK RAL certificate
- Article according to EN 1074-1, EN 1074-2
- Face to face according to producer documentation JAFAR
- Product marking according to EN 19; EN 1074

Application:

Water networks and tanks. Transport of non aggressive liquids.
Working conditions:
temp. up +70°C
pressure up to 1,6 MPa

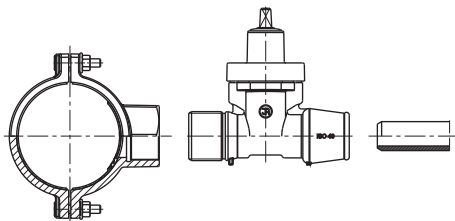
Execution variant:

Ductile cast iron EN-GJS 500-7
SS body bonnet screws

Test control:

Hydraulic test according to EN 1074-1, EN 1074-2; EN 12266-1
Seat 1,1 x PN
Body 1,5 x PN
Operation torque test

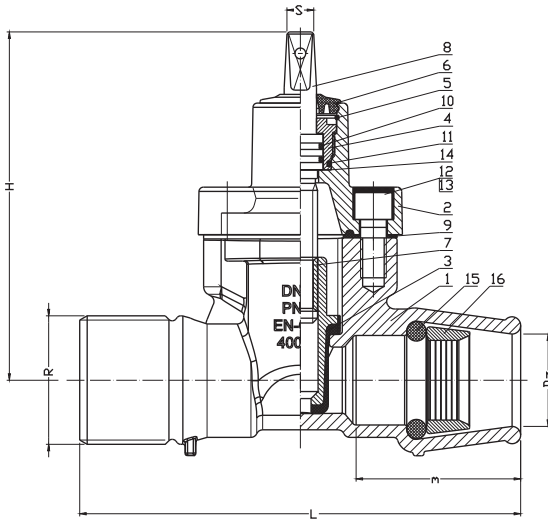
Installation:



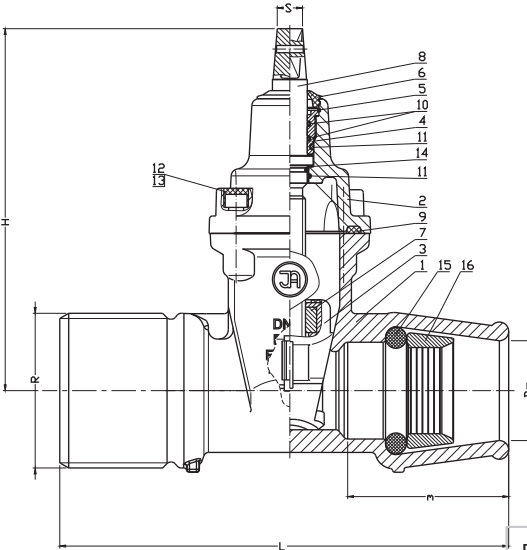
Accessories:

Extension spindle - see: 9010, 9011
Weld for ISO connections - see: 9306
Street box - see: 9501 9503 9504 9509

For diameters DN20 - DN32



For diameters DN40 - DN50



| No. | Part | Standard execution |
|-----|--------------------|--|
| 1 | Body | Ductile cast iron EN-GJS 400-15 EN 1563 |
| 2 | Bonnet | Ductile cast iron EN-GJS 400-15 EN 1563 |
| 3 | Wedge | Brass CW617N (DN20-DN32) EN 1982 Ductile cast iron (DN40-DN50) EN-GJS 400-15; EN 1563 Rubber EPDM NBR PN ISO 1629 |
| | Wedge slider | Tarnofom 300 (DN40-DN50) EN ISO 1874-1 |
| 4 | Packing cork | Brass CW617N EN 12165 |
| 5 | Protection ring | Steel 1.1260 EN-74/H-84032 |
| 6 | Cleaning gasket | Rubber EPDM NBR EN ISO 1629 |
| 7 | Spindle nut | Brass CW617N (DN40-DN50) EN 12165 |
| 8 | Spindle | Stainless steel 1.4021 EN 10088-1 |
| 9 | Body-bonnet gasket | Rubber EPDM NBR EN ISO 1629 |
| 10 | O-ring | Rubber EPDM NBR EN ISO 1629 |
| 11 | | |
| 12 | Screw | Steel Fe/Zn5, stainless steel EN ISO 4762 |
| 13 | Screw stopper | Wax |
| 14 | Washer | Tarnofom 300 EN ISO 1874-1 |
| 15 | Gasket | Rubber EPDM NBR ISO 1629 |
| 16 | Tension ring | POM EN ISO 1874-1 |

- other material variants on special request

| DN | Dz | R | PN | H | L | m | S | Weight |
|------|------|------|-------|------|------|------|------|--------|
| [mm] | [mm] | [mm] | [Bar] | [mm] | [mm] | [mm] | [mm] | [kg] |
| 20* | 25 | 2 | 16 | 160 | 180 | 52 | 12 | 3 |
| 25 | 32 | 2 | 16 | 160 | 186 | 72 | 12 | 3,5 |
| 32 | 40 | 2 | 16 | 160 | 196 | 77 | 12 | 4,1 |
| 40* | 50 | 2 | 16 | 215 | 230 | 80 | 14 | 7 |
| 50* | 63 | 2 | 16 | 225 | 270 | 85 | 14 | 8,5 |

* during commissioning

We reserve the rights to modify the production program and the given data without separate notices due to the permanent company development.