

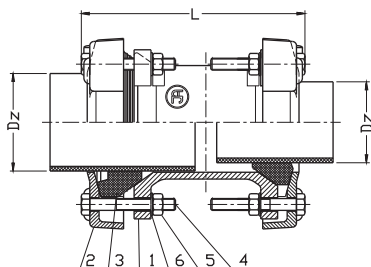
Pipe connector RR
multidiameter

PN10
PN16

WATER



No.	Part	Standard execution
1	Body	Ductile cast iron EN-GJS 500-7
2	Flange	EN 1563
3	Gasket	Rubber EPDM EN-ISO1629
4	Screw	Steel Fe/Zn5 Stainless steel A2 EN ISO 4017
5	Nut	Steel Fe/Zn5 Stainless steel A4 EN ISO 4032
6	Washer	Steel Fe/Zn5 Stainless steel A2 EN ISO 7091



DN	D _z	L	Weight
	[mm]		[kg]
50	40-75	280	8,5
60 / 65	60-95	300	8,0
	80-115	300	11,5
100	105-135	300	13,8
125	130-165	340	15,5
150	155-195	340	16,8
175	190-230	340	21,0
200	215-258	340	23,0
225	240-280	360	27,0
250	235-275 / 270-310	360	26,0 / 29,0
300	310-350 / 350-390	370	33,0 / 36,0
350	350-390 / 395-435	370	39
400	395-435 / 435-470 / 470-505	370	43,0 / 45,0
500	505-540 / 540-575 / 575-610	370	50,0 / 70,0 / 74,0
	610-645 / 645-680 / 680-715	370	58,0 / 81,0 / 82,0
700	710-745	370	86,0
800	810-845	370	95,0

Product description (standard execution):

- Flexible positioning of the pipe with a buffer zone
- Possibility of axial deflection up to $\pm 8^\circ$
- Body and the flange made of ductile cast iron EN-GJS 500-7
- The shape of the gasket enables easy installation of pipes without beveling, range
- The gasket provide easy seating into connector and make provision for good contact to a pipe even in places with minor defects, irregularities or corrosion pits
- Galvanized or stainless steel screws
- Epoxy coating resistant of UV, EN 14901, GSK RAL certificate
- Product marking according to EN 19; EN 1074

Application:

Water line networks: potable water and other chemically inert fluids. Connection of straight naked-end pipes made of cast iron, asbestos-cement or PVC.
Working pressure up to 1.6 MPa, temperature up to +70°C

Test control:

Water pressure test according to EN 1074-1; EN 12266-1
Seat: 1,1 x PN
Body: 1,5 x PN

We reserve the rights to modify the production program and the given data without separate notices due to the permanent company development

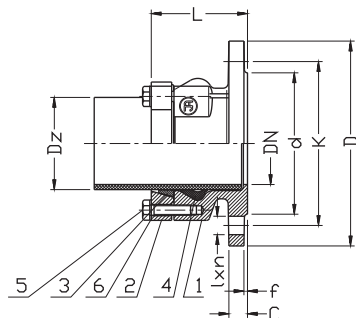
Flange adaptor for PE and PVC pipes

PN10
PN16

WATER



No.	Part	Standard execution
1	Body	Ductile cast iron
2	Flange	EN-GJS 500-7 EN 1563
3	Ring	Brass CuZn39PbAl1-B EN 1982
4	Ring FORSHEDA 575	Rubber EPDM EN-ISO 1629
5	Screw	Stainless steel A2 EN ISO 4017
6	Washer	Stainless steel A2 EN ISO 7091
7	Pipe	PE, EN ISO 1872-1



DN	D ₂	D PN16 (PN10)	K PN16 (PN10)	d	L x n PN16 (PN10)	f	C	L	Weight
									[mm]
									[kg]
50	63	165	125	99	19x4	3	19	90	3,8
65	75	185	145	118	19x4	3	19	93	4,3
80	90	200	160	132	19x8(4)	3	19	95	5,5
100	110	220	180	156	19x8	3	19	95	6,5
100	125	220	180	156	19x8	3	19	102	7,2
125	125	250	210	184	19x8	3	19	100	8,3
150	160	285	240	211	23x8	3	19	115	11,6
200	200	340	295	266	23x12(8)	3	20	139	14,5
200	225	340	295	266	23x12(8)	3	20	141	15,8
250	250	400	355 (350)	319	28(23)x12	3	22	156	22,0
250	280	400	355 (350)	319	28(23)x12	3	22	161	23
300	315	455	410 (400)	370	28(23)x12	4	25	180	33
300	355	455	410 (400)	370	28(23)x12	4	25	285	55
400	400	580	525(515)	480	31(28)x16	4	25	245	53
400	450	580	525(515)	480	31(28)x16	4	25	315	71
500	500	715(670)	650(620)	609	34(28)x20	4	26	340	90
500	560	715(670)	650(620)	609	34(28)x20	4	26	410	105
600	630	840(760)	770(725)	720	37(31)x20	5	30	478	145

Product description (standard execution):

- Flexible positioning of the pipe with a buffer zone
- The brass clamp ring hold and protect against pipe movements
- EPDM sealing approved for potable water, chemically resistant and providing
- Excellent compression and recovery to the original shape
- Sealing and strengthening kit
- The sealing and flange included as a set
- Construction pressure of 35 bars EN 12842. Operating pressure max 16 bar
- In case of thin-walled PVC pipes, strengthening sleeve should be used inside the pipe
- Epoxy coating minimum 250 microns according to EN 14901, GSK RAL certificate
- Product marking according to EN 1092-2 (DIN 2501); pressure PN10; PN16

Application:

Water line networks: potable water and other chemically inert fluids. Flanged connectors for naked-end pipes made of PVC or PE
Working pressure up to 1.6 MPa, temperature up to +70°C

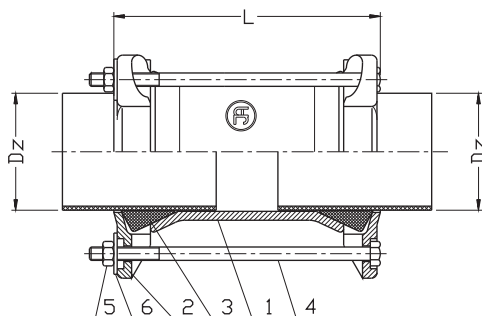
Test control:

Water pressure test according to EN 1074-1; EN 12266-1
Sea: 1,1 x PN
Body: 1,5 x PN

Straight coupling RR type

**PN10
PN16**

WATER



No.	Part	Standard execution
1	Body	Ductile cast iron EN-GJS 500-7
2	Flange	EN 1563
3	Gasket	Rubber EPDM EN ISO1629
4	Screw	Steel Fe/Zn5 Stainless steel A2 EN ISO 4017
5	Nut	Steel Fe/Zn5 Stainless steel A4 EN ISO 4032
6	Washer	Steel Fe/Zn5 Stainless steel A2 EN ISO 7091

DN	D ₂	L	Weight
			[kg]
40 / 50	47-60	190	2,2
50 / 65	57-72	210	4,0
50 / 65 / 80	68-85	210	4,5
80 / 100	84-106	210	5,0
100 / 125	103-116 / 108-130	210	7,5
		230	7,0
125 / 150	128-146 / 134-155	210	7,2
		230	7,7
150 / 175 / 200	153-175 / 165-185	210	8,6
		230	8,0
175 / 200	184-207	260	11,5
		260	12,0
200	208-225 / 218-236 / 222-250	260	14,0 / 14,5
		260	17,0
250	246-270 / 264-284 / 282-306	300 / 260	20,0
		300	24,0
300	305-326 / 315-335 / 335-355 / 360-386	260 / 300	21,0 / 23,0
		300	28,0
350	386-410	300	28,0
400	408-435 / 425-448 / 465-500	260 / 300	29,0 / 34,0
		330	40

Product description (standard execution):

- Acceptable axial deviation on each side $\pm 8^\circ$
- EPDM sealing approved for potable water
- Stainless steel or galvanized nuts and screws
- Plastic protection caps at screw ends
- Installation in any position allowed
- Body and flange made of ductile cast iron EN-GJS 500-7
- Grooved gasket absorbs minor imperfections of the pipe surface
- Epoxy coating to EN 14901
- Face to face according to the JAFAR documentation

Application:

Water line networks: potable water and other chemically inert fluids. Connection of straight naked-end pipes made of cast iron, asbestos-cement or PVC.
Working pressure up to 1.6 MPa, temperature up to +70°C

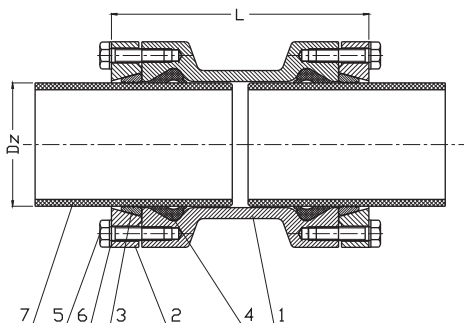
Test control:

Water pressure test according to EN 1074-1; EN 12266-1
Seat: 1, 1x PN
Body: 1,5 x PN

Pipe coupling for PE and PVC pipes RR type

PN10
PN16

WATER



No.	Part	Standard execution
1	Body	Ductile cast iron EN-GJS 500-7
2	Flange	EN 1563
3	Ring	Brass CW617N EN 12165
4	Ring FORSHEDA 575	Rubber EPDM EN ISO 1629
5	Screw	Stainless steel A2 EN ISO 4017
6	Washer	Stainless steel A2 EN ISO 7091
7	Pipe	PE EN ISO 1872-1

DN	D ₂	L	Weight
	[mm]		[kg]
50	63	180	4,7
80	90	190	5,8
100	110	190	6,7
150	160	230	13,0
200	225	276	20,0
250	280	310	23,2
300	315	368	32,0

Product description (standard execution):

- Flexible positioning of the pipe with a buffer zone
- The brass clamp ring hold and protect against pipe movements
- The tube does not move within the plant, providing a sealed connection
- EPDM sealing approved for potable water, chemically resistant and providing excellent compression and recovery to the original shape
- Sealing and strengthening kit
- The sealing and flange included as a set
- Construction pressure of 35 bars according to EN 12842. Operating pressure max 16 bar
- In case of thin-walled PVC pipes, strengthening sleeve should be used inside the pipe
- Epoxy coating minimum 250 microns according to EN 14901, GSK RAL certificate
- Face to face according to the JAFAR documentation

Application:

Water line networks: potable water and other chemically inert fluids.
Connectors for naked-end pipes made of PVC or PE
Working pressure up to 1.6 MPa, temperature up to +70°C

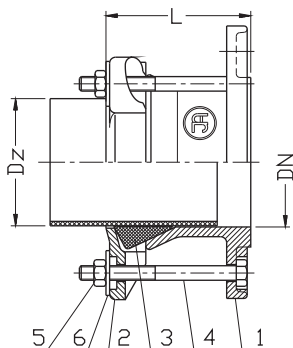
Test control:

Water pressure test according to EN 1074-1; EN 12266-1
Seat: 1, 1 x PN
Body: 1,5 x PN

Flange adaptor RK type

PN10
PN16

WATER



No.	Part	Standard execution
1	Body	Ductile cast iron EN-GJS 500-7
2	Flange	EN 1563
3	Gasket	Rubber EPDM EN ISO1629
4	Screw	Steel Fe/Zn5 EN ISO 4017
5	Nut	Steel Fe/Zn5 Stainless steel A4 EN ISO 4032
6	Washer	Steel Fe/Zn5 Stainless steel A2 EN ISO 7091

DN	D ₂	L	Weight
[mm]			[kg]
50 / 65	57-72	120	5,0
50 / 65 / 80	68-85	120	6,0
80 / 100	84-106	120	6,0
100 / 125	103-116 / 108-130	120	7,0 / 7,8
125 / 150	128-146 / 134-154	120	9,0 / 9,6
150 / 175 / 200	153-175 / 165-185	120	11,0
175 / 200	184-207	120	13,6
200	208-225 / 218-236 / 222-250	150	14,5
		150	
250	246-270 / 264-284 / 282-306	150	18,5 / 18,5 / 22,0
		150	
300	305-326 / 315-335 / 334-355 / 360-386	150	23,0 / 27,0 / 28,0 / 36,0
		150	
350	386-410	150	25,0 / 28,0
400	408-435 / 425-448 / 465-500	180	28,0 / 30,0 / 44,0
		180	

Product description (standard execution):

- Acceptable axial deviation at each end up to ±4
- EPDM Rubber sealing approved for potable water
- Stainless steel or galvanized nuts and screws
- Plastic protection caps at screw ends
- Installation in any position allowed
- Body and flange made of ductile cast iron EN-GJS 500-7
- Grooved gasket absorbs minor imperfections of the pipe surface
- Epoxy coating to EN 14901
- Product marking according to EN 1092-2 (DIN 2501); pressure PN10; PN16
- Face to face according to the Jafar documentation

Application:

Water line networks: potable water and other chemically inert fluids. Connection of straight naked-end pipes made of cast iron, asbestos-cement or PVC to fittings flange
Working pressure up to 1.6 MPa, temperature up to +70°C

Test control:

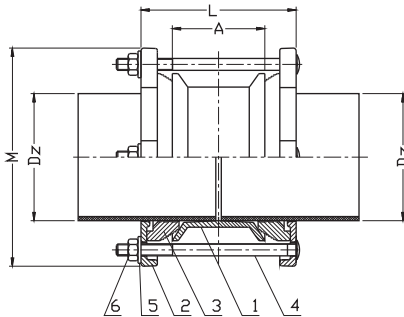
Water pressure test according to EN 1074-1; EN 12266-1
Seat: 1, 1xPN
Body: 1,5 x PN

We reserve the rights to modify the production program and the given data without separate notices due to the permanent company development

Pipe coupling

PN10
PN16

WATER



No.	Part	Standard execution
1	Body	Ductile cast iron EN-GJS 500-7
2	Flange	EN 1563
3	Gasket	Rubber EPDM EN ISO 1629
4	Screw	Steel Fe/Zn5 Stainless steel A2 EN ISO 4017
5	Washer	Steel Fe/Zn5 Stainless steel A2 EN ISO 7091
6	Nut	Steel Fe/Zn5 Stainless steel A4 EN ISO 4032

DN*	D ₂	L	A	M	Weight
	[mm]				[kg]
40	47-60	190	100	149,5	3,1
50	57-74	190	95	154,5	3,0
65	63-85	190	95	173,5	3,6
80	84-107	190	95	195,5	4,1
100	106-132	190	95	224,5	4,8
125	132-158	190	95	254,5	6,0
150	157-185	190	95	280,5	6,9
200	189-212	230	130	306,5	9,4
200	218-244	230	130	342,5	10,9
250	264-295	230	130	399,5	14,6
300	315-349	230	130	462,5	19,4

* DN350 do DN2000 on request.

Product description (standard execution):

- Acceptable axial deviation at each end up to ±6°
- EPDM Rubber sealing approved for potable water
- Stainless steel or galvanized nuts and screws
- Plastic protection caps at screw ends
- Installation in any position allowed
- Body and flange made of ductile cast iron EN-GJS 500-7
- Grooved gasket absorbs minor imperfections of the pipe surface
- Epoxy coating minimum 250 microns according to EN 14901, GSK RAL certificate
- Face to face according to the Jafar documentation

Application:

Water line networks: potable water and other chemically inert fluids. Connection of straight naked-end pipes made of cast iron, asbestos-cement or PVC.
Working pressure up to 1.6 MPa, temperature up to +70°C

Test control:

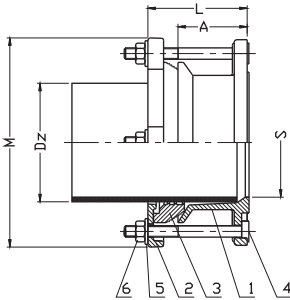
Water pressure test according to EN 1074-1; EN 12266-1
Seat: 1, 1 x PN
Body: 1,5 x PN

We reserve the rights to modify the production program and the given data without separate notices due to the permanent company development

Flange adaptor

PN10
PN16

WATER



No.	Part	Standard execution
1	Body	Ductile cast iron EN-GJS 500-7
2	Flange	EN 1563
3	Gasket	Rubber EPDM EN ISO 1629
4	Screw	Steel Fe/Zn5 Stainless steel A2 EN ISO 4017
5	Washer	Steel Fe/Zn5 Stainless steel A2 EN ISO 7091
6	Nut	Steel Fe/Zn5 Stainless steel A4 EN ISO 4032

DN'	S	D ₂	L	A	M	Weight
[mm]						[kg]
50	59	57-74	124	75	164	2,7
65	75	63-85	124	75	197	3,5
80	101	84-107	124	75	203	3,7
100	121	106-132	134	75	228	4,4
125	150	132-158	134	75	282	5,6
150	173	157-185	134	75	283	6,0
200	202	189-212	134	75	337	8,3
200	225	218-244	134	75	338	8,3
250	277	264-295	146	85	402	11,4
300	329	315-349	155	100	458	14,8

* DN350 do DN600 on request.

Product description (standard execution):

- Acceptable axial deviation at each end up to ±3°
- EPDM Rubber sealing approved for potable water
- Stainless steel or galvanized nuts and screws
- Plastic protection caps at screw ends
- Installation in any position allowed
- Body and flange made of ductile cast iron EN-GJS 500-7
- Grooved gasket absorbs minor imperfections of the pipe surface
- Epoxy coating minimum 250 microns according to EN 14901, GSK RAL certificate
- Flange connection according to EN 1092-2 (DIN 2501) pressure PN10, PN16

Application:

Water line networks: potable water and other chemically inert fluids. Connection of straight naked-end pipes made of cast iron, asbestos-cement or PVC to fittings flange.
Working pressure up to 1.6 MPa, temperature up to +70°C

Test control:

Water pressure test according to EN 1074-1; EN 12266-1
Seat: 1, 1 x PN
Body: 1,5 x PN

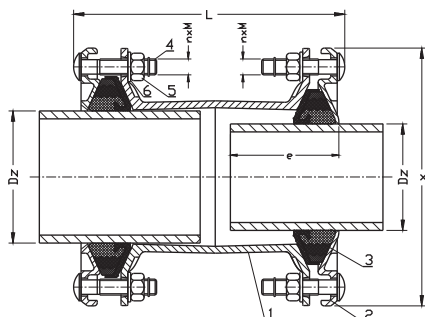
We reserve the rights to modify the production program and the given data without separate notices due to the permanent company development

Stepped coupling

PN10
PN16

WATER

GAS



No.	Part	Standard execution
1	Body	Ductile cast iron EN-GJS 450-10 EN 1563
2	Retaining ring	
3	Gasket	Rubber EN ISO1629 NBR EN 682 EPDM EN 681-1
4	Screw	Stainless steel A2 EN ISO 4017
5	Nut	Stainless steel A2 EN ISO 4032
6	Washer	Stainless steel A2 EN ISO 7091

DN	PN water	PN gas	D ₂	L	x	e	n x M	Weight
[mm]	[bar]			[mm]			-	[kg]
50	16	8	46-71 / 46-71	209-233	164	95	3xM12 / 3xM12	4,8
65	16	8	63-90 / 63-90	220-250	186	100	3xM12 / 3xM12	5,6
80	16	8	84-105 / 84-105	234-262	204	115	3xM12 / 3xM12	7,2
100	16	8	104-132 / 104-132	230-268	234	110	3xM16 / 3xM16	9,4
125	16	8	132-155 / 132-155	246-282	264	120	4xM16 / 4xM16	12,0
150	16	8	154-192 / 154-192	242-298	304	120	4xM16 / 4xM16	14,8
200	16	8	192-232 / 192-232	297-351	354	140	6xM16 / 6xM16	28,6
225	16	8	230-268 / 230-268	342-404	386	145	6xM20 / 6xM20	33,4
250	16	8	267-310 / 267-310	354-424	432	170	6xM20 / 6xM20	40,0
300	16	8	315-356 / 315-356	356-426	490	170	8xM20 / 8xM20	51,0
350	10	5	352-393 / 352-393	504-588	534	245	10xM20 / 10xM20	61,0
400	10	5	392-433 / 392-433	562-648	574	275	10xM20 / 10xM20	73,0
450	10	5	450-482 / 450-482	530-580	641	275	10xM20 / 10xM20	100,0
500	10	5	500-532 / 500-532	530-580	691	275	10xM20 / 10xM20	109,0
550	10	5	548-580 / 548-580	530-580	739	275	12xM20 / 12xM20	115,0
600	10	5	605-637 / 605-637	530-580	796	275	14xM20 / 14xM20	113,0

For PE and PVC pipes recommends use steel inserts.

Product description (standard execution):

- Protection against pull out of the pipe made of stainless steel A4
- Acceptable axial deviation up to $\pm 8^\circ$
- Applicable to all types straight naked-end pipes
- Elastomer gasket enabling easy assembly
- Body and flange made of ductile cast iron EN-GJS 450-10
- Stainless steel bolts and nuts
- Plastic protection caps at screw ends
- Installation in any position allowed
- Epoxy coating to EN 14901

Application:

Water line networks; potable water of natural gas networks and other chemically inert fluids. Connection of straight naked-end pipes made of cast iron iron, asbestos-cement or PVC.

Working pressure up to 1.6 MPa, temperature up to +50°C

Test control:

Water pressure test according to EN 1074-1; EN 12266-1
Seat: 1,1 x PN
Body: 1,5 x PN

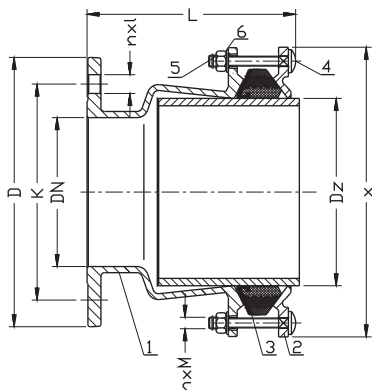
We reserve the rights to modify the production program and the given data without separate notices due to the permanent company development

Flange adaptor

PN10
PN16

WATER

GAS



No.	Part	Standard execution
1	Body	Ductile cast iron EN-GJS 450-10
2	Retaining ring	EN 1563
3	Gasket	Rubber EN ISO1629 NBR EN 682 EPDM EN 681-1
4	Screw	Stainless steel A2 EN ISO 4017
5	Nut	Stainless steel A4 EN ISO 4032
6	Washer	Stainless steel A2 EN ISO 7091

DN	PN water	PN gas	D ₂	D PN16 (PN10)	K PN16 (PN10)	n x l PN16 (PN10)	n x M	L	x	Weight
[mm]	[bar]			[mm]			-	[mm]		[kg]
50	16	8	46-71	165	125	4x19	3xM12	179-194	164	5,6
65	16	8	63-90	185	145	4x19	3xM12	187-198	186	6,5
80	16	8	84-105	200	160	8x19	3xM12	183-197	204	7,6
100	16	8	104-132	220	180	8x19	3xM16	181-200	236	8,6
125	16	8	132-155	250	210	8x19	4xM16	196-214	264	13,0
150	16	8	154-192	285	240	8x23	4xM16	194-222	304	18,0
200	16	8	192-232	340	295	12(8)x23	6xM16	224-251	354	21,7
250	16	8	267-310	405 (395)	355 (350)	12x28(23)	6xM20	260-295	432	31,0
300	16	8	315-356	460 (445)	410 (400)	12x28(23)	8xM20	283-318	490	40,5
350	10	5	352-393	520 (505)	470 (460)	16x28(23)	8xM20	326-364	534	52,0
400	10	5	392-433	580 (565)	525 (515)	16x31(28)	10xM20	356-395	574	65
500	10	5	500-532	715 (670)	650 (620)	20x34(28)	10xM20	365-390	715	94
600	10	5	605-637	840 (780)	770 (725)	20x37(31)	14xM20	365-390	840	120

For PE and PVC pipes recommends use steel inserts.

Product description (standard execution):

- Protection against pull out of the pipe made of stainless steel A4
- Acceptable axial deviation up to $\pm 8^\circ$
- Applicable to all types straight naked-end pipes
- Elastomer gasket enabling easy assembly
- Body and flange made of ductile cast iron EN-GJS 450-10
- Stainless steel bolts and nuts
- Plastic protection caps at screw ends
- Installation in any position allowed
- Epoxy coating to EN 14901
- Flange connection according to EN 1092-2 (DIN 2501) pressure PN10, PN16

Application:

Water line networks; potable water of natural gas networks and other chemically inert fluids. Connection of straight naked-end pipes made of cast iron iron, asbestos-cement or PVC to fitting flange.
Working pressure up to 1.6 MPa, temperature up to +50°C

Test control:

Water pressure test according to EN 1074-1; EN 12266-1
Seat: 1, 1x PN
Body: 1,5 x PN

We reserve the rights to modify the production program and the given data without separate notices due to the permanent company development