

**Air release valve**  
double orifice

PN10  
PN16

**WATER**



### Product description (standard execution):

- Patented self-cleaning sealing of automatic double stage air release nozzle
- Kinetic single stage of air release
- Enables maintenance and removal/exchange of working parts on running pipeline
- Automatic full dehydration system - amount of water remaining = 0
- Hydraulic impacts prevention
- All internal parts made of stainless steel 1.4301
- Product according to EN 1074-4
- Flange connection according to EN 1092-2(DIN2501) pressure PN10, PN16
- Product marking according to EN 19; EN 1074

### Application:

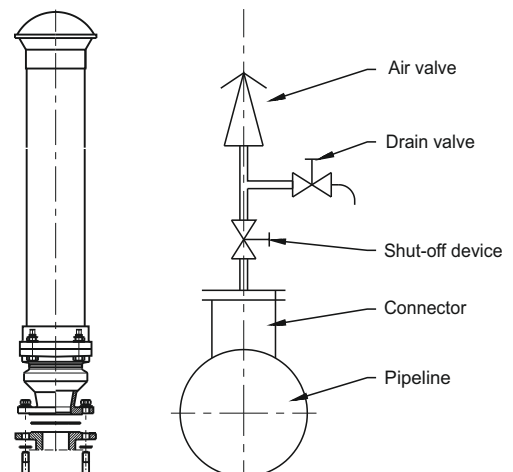
Air release valve intended for use at water lines - for air release and aeration of the pipelines. Working conditions: temp. up to +70°C

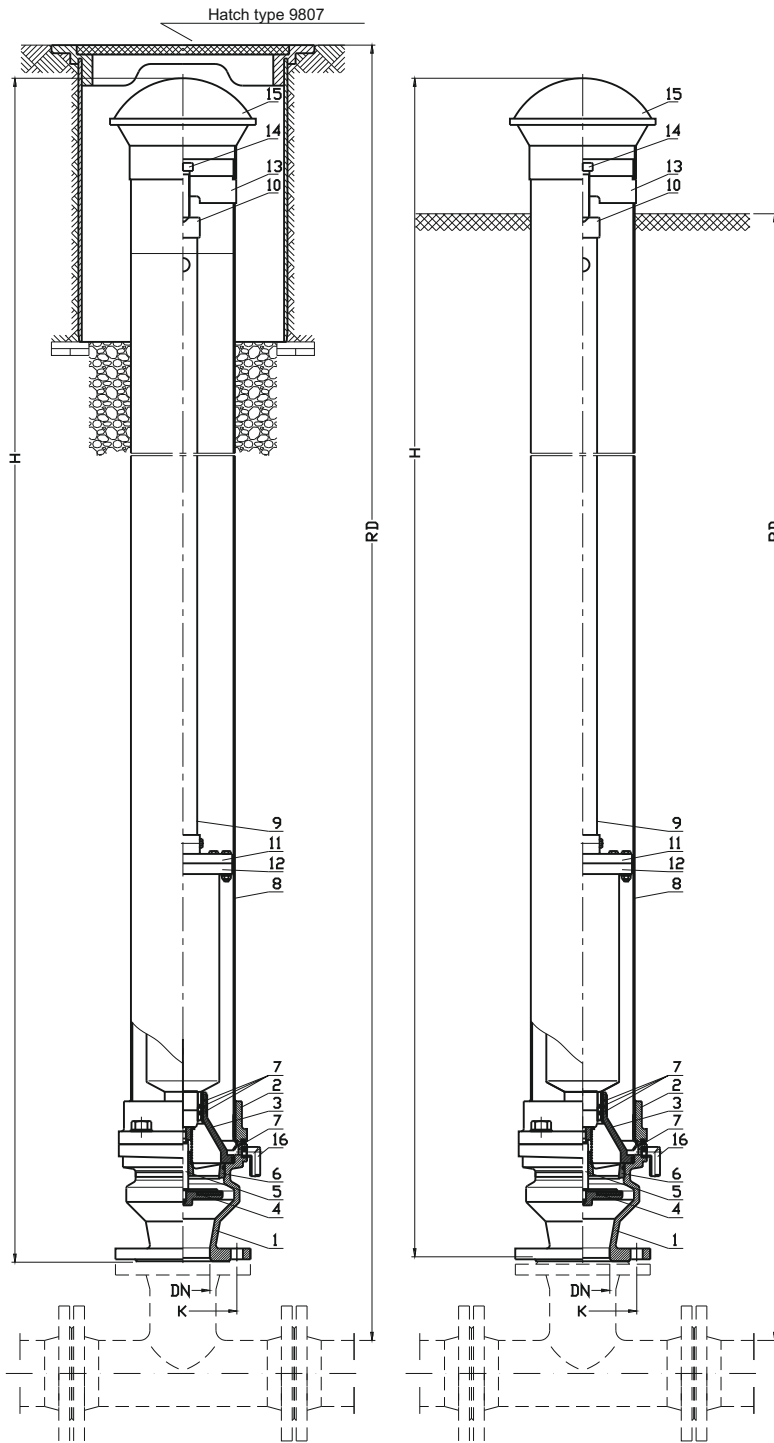
### Test control:

Water pressure test according to EN 1074-1; EN 1074-2; EN 12266-1  
Seat: 1,1 x PN  
Body: 1,5 x PN

### Installation:

Recommended to mount in vertical position in highest or inflection point of pipeline





| No. | Part                             | Standard execution                                    |
|-----|----------------------------------|---|
| 1   | Body                             | Ductile cast iron<br>EN-GJS 400-15<br>EN 1560         |
| 2   | Flange                           | Ductile cast iron<br>EN-GJS 400-15<br>EN 1560         |
| 3   | Bushing                          | Ductile cast iron<br>EN-GJS 400-15<br>EN 1560         |
| 4   | Valve plug                       | Brass CW617N<br>EN 1412<br>Rubber EPDM<br>EN-ISO 1629 |
| 5   | Pin                              | Stainless steel 1.4301<br>EN 10027-2                  |
| 6   | Fence                            | Brass CW617N<br>EN 1412                               |
| 7   | Gasket ring                      | Rubber EPDM<br>EN-ISO 1629                            |
| 8   | Casing pipe                      | Stainless steel 1.4301<br>EN 10027-2                  |
| 9   | Pipe                             | Stainless steel 1.4301<br>EN 10027-2                  |
| 10  | Socket pipe                      | Stainless steel 1.4301<br>EN 10027-2                  |
| 11  | Flange                           | Stainless steel 1.4301<br>EN 10027-2                  |
| 12  | Air release valve for wastewater | Stainless steel<br>EN 10027-2                         |
| 13  | Support                          | Ductile cast iron<br>EN-GJS 400-15<br>EN 1560         |
| 14  | Screw                            | Stainless steel A2<br>EN 10027-2                      |
| 15  | Bonnet                           | Polipropylene<br>EN ISO 19069-1                       |
| 16  | Dehydrator                       | Polipropylene<br>EN ISO 19069-1                       |

| DN  | RD                          |                           | H    | K   | Weight |
|-----|-----------------------------|---------------------------|------|-----|--------|
|     | Installation of underground | Installation above ground |      |     |        |
|     | [mm]                        |                           |      |     | [kg]   |
| 50  | 1250                        | 1000                      | 1095 | 125 | 29,5   |
| 50  | 1500                        | 1250                      | 1345 | 125 | 32,0   |
| 50  | 1750                        | 1500                      | 1595 | 125 | 34,0   |
| 50  | 2000                        | 1750                      | 1845 | 125 | 36,0   |
| 50  | 2250                        | 2000                      | 2095 | 125 | 38,0   |
| 80  | 1250                        | 1000                      | 1095 | 160 | 33,0   |
| 80  | 1500                        | 1250                      | 1345 | 160 | 35,5   |
| 80  | 1750                        | 1500                      | 1595 | 160 | 38,2   |
| 80  | 2000                        | 1750                      | 1845 | 160 | 41,2   |
| 80  | 2250                        | 2000                      | 2095 | 160 | 44,0   |
| 100 | 1250                        | 1000                      | 1095 | 180 | -      |
| 100 | 1500                        | 1250                      | 1345 | 180 | -      |
| 100 | 1750                        | 1500                      | 1595 | 180 | -      |
| 100 | 2000                        | 1750                      | 1845 | 180 | -      |
| 100 | 2250                        | 2000                      | 2095 | 180 | -      |